

## CAST

**Suraj** Amarjit Bassan  
**Lal** Ravin J Ganatra  
**Baba** Bhasker Patel  
**Chandni** Goldy Notay  
**Dhani** Gurpreet Singh

**Director** Janet Steel  
**Designer** Emma Wee  
**Lighting** Jenny Cane  
**Composer** Sayan Kent  
**Assistant Director** Natalie Ibu  
**Company Stage Manager** Alex Weller  
**Deputy Stage Manager** Mandeep Kaur Aujla

**General Manager** Christopher Corner  
**Dramaturgy** Penny Gold and Janet Steel  
**Press Representation** Suman Bhuchar  
**Marketing** Dan Pursey @ Mobius  
**Graphic Design** Luke Wakeman  
**Photography** Robert Day  
**Set built by** David Mitchell  
**Women's costumes made by** Sarah Floyd

**First performance: 23 April 2008** at Contact Theatre, Manchester

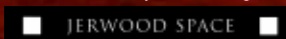
Kali would like to thank Jon McGrath, Amanda Roberts and everyone at Manchester Contact Theatre for all their help and support with mounting Zameen.

Thanks to Richard Lee at The Jerwood Space, Martin Witts and all the Arts Theatre, Philip Cheng and all those whose help came too late to be mentioned here.

Special thanks to Paulette Randell and all those involved in presenting the initial readings, the workshop production and the Decibel presentation of Zameen.

Special thanks also to Beesh Zytynski and Mark Sumner of Bete Limited, East Sussex for donation of the fertilizer sprayer

Subsidised rehearsal facilities provided by the



Media Partner

The development of Zameen was supported by **Bloomberg**

Kali is funded by Arts Council England



Special thanks to Mr Sunny and Mrs H Sikri of Little India, Southall for the loan of the Charka (cotton spinning wheel).



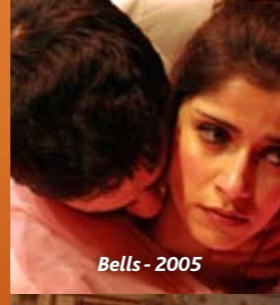
A Thin Red Line - 2007



Deadeye - 2006



Paper Thin - 2006



Bells - 2005



Chaos - 2005



Calcutta Kosher - 2003



Sock 'em With Honey - 2002

*Kali seeks out strong individual Asian women writers who challenge our perceptions through original and thought provoking theatre. The company has established a reputation for presenting work that takes audiences on unpredictable journeys that entertain, excite and inspire.*

Since its inception in 1990, Kali's connections within the Asian community have made it a natural home for women who are seeking new ways to express and explore the issues and human interest stories of the Diaspora.

Kali aims to present the distinct perspective and experience of Asian women to people from all backgrounds and to celebrate that richness and diversity.

No idea is too small, no statement too large. We actively encourage our writers and audience to reinvent and reshape the theatrical agenda.

Through our new writer development programmes, we provide core resources for writers new to the theatre through workshops, dramaturgical support and public readings.

**Artistic Director Janet Steel**  
**General Manager Christopher Corner**

**Board of Trustees: Shelley King (Chair), Elizabeth Cuffy, Penny Gold, Shobu Kapoor, Shyama Perera, Shiroma Silva, Jocelyn Watson**

Kali was founded by **Rukhsana Ahmad** and **Rita Wolf**.

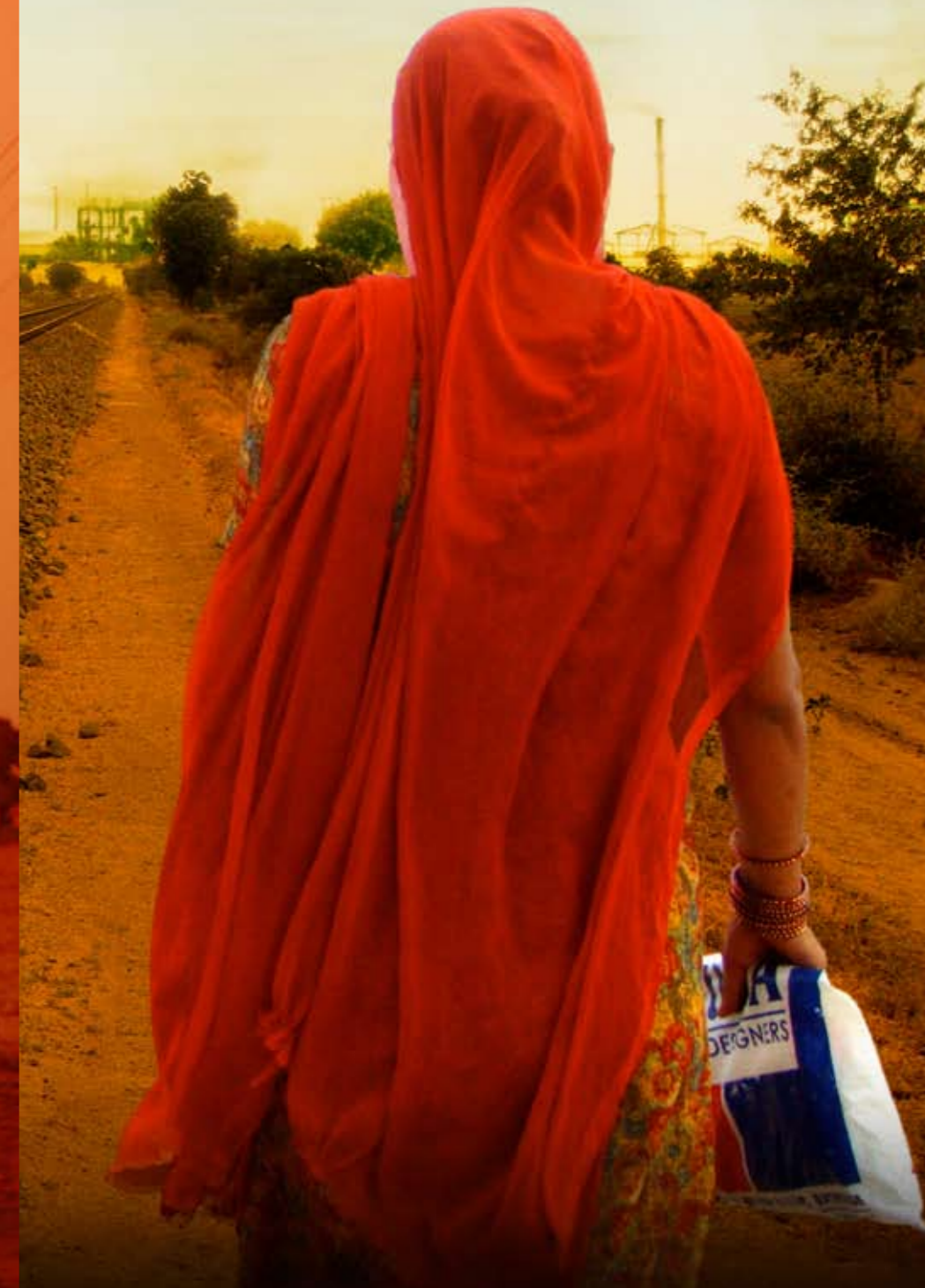
**Kali Theatre Co.** 18 Rupert Street London W1D 6DE  
**020 7494 9100** [info@kalitheatre.co.uk](mailto:info@kalitheatre.co.uk)  
[www.kalitheatre.co.uk](http://www.kalitheatre.co.uk)

Ltd Co. No. 2583595 Registered Charity No. 1071733

Photos (left): **Robert Day, Bob Workman**  
 Programme Photos: **Satinder Kaur Chohan**  
 Leaflet photos: **Emma Wee and Satinder Kaur Chohan**

# ZAMEEN

BY SATINDER KAUR CHOCHAN



## FERTILISERS, PESTICIDES AND SUICIDES

During the 1960s and 1970s, an American-influenced Green Revolution in Punjab replaced traditional farming techniques with intensive modern practices. High yield seeds, chemical fertilisers, pesticides and machinery dramatically increased productivity and transformed India from a food-deficit nation into a self-sufficient one. Punjab became the 'Breadbasket of India'.

However, over the next two decades, the revolution turned sour. Overproduction exhausted the soil, excessive use of fertilisers rendered crops more vulnerable to pests, while drought and deforestation disrupted Punjab's fragile eco-systems.

In the 1990s, First World nations via the WTO and IMF drove India towards rapid trade liberalisation. India flung open its doors to multinational corporations and agrochemical companies rushed in to monopolise seed, chemical and fertiliser markets in Punjab.

Seeking to extract higher yields and profits from the depleted Punjabi soil, large agribusinesses encouraged the introduction of First World biotechnology and genetic engineering to create a so called 'Gene Revolution'. Punjab has become a testing ground for GM crops whose use is still being debated in much of the First World. Officially launched just a few years ago with great fanfare as a 'pest-resistant' GM seed, thousands of acres of Bt Cotton were destroyed by the mealy bug last year.

Since the late 90s, the spiralling costs of GM seeds, chemical fertilisers and pesticides, machinery and diesel have forced independent farmers to take out heavy loans from banks and increasingly private moneylenders, who charge extortionate rates of interest. Their inability to repay these escalating loans due to low income from repeated crop failures, water shortages, low market prices and lack of government support are driving many farmers into severe debt. As a final, desperate solution, thousands have felt forced to take their own lives.

Satinder Kaur Chohan



## COMPANY BIOGRAPHIES

### Satinder Kaur Chohan WRITER

The Chauhan tribe is said to originate from a mythological fire atop Mount Abu in India. Somehow, my branch made it down the mountainside, via the Land of the Five Rivers and lush green fields of Punjab, all the way to Southall, West London, where I was the first member of my immediate family born in Britain. After studying English Language and Literature at King's College London and post-graduate studies at Yale University in the US, I edited the British Asian style and culture magazine *2nd Generation*. I have worked extensively in journalism, publishing, broadcasting, documentary research and new media, often around South Asian issues and am currently developing a collection of short stories around Punjabi Desi culture. In 2006, I was selected as a writer for the Emerging Writers' Residency at Edinburgh's Traverse Theatre, where I began developing my second play *The Beauty Room*. In 2007, with support from Arts Council England, I went to Sangrur and Bathinda in southern Punjab to research and develop *Zameen*. My first trip to Punjab's cotton fields coincided with the beginning of the sowing season; the second trip in time for the harvest.

### Amarjit Bassan SURAJ

Trained at the Royal Scottish Academy of Music and Drama. **Theatre includes** *There's Something About Simmy* (Rifco Arts national tour), *Aladdin* (Greenwich Theatre), *Strictly Dandia* (Tamasha Theatre Co), *Twelfth Night* (West End). **TV:** *Messiah IV, The Best Man, Featherboy, My Hero, Is Harry On The Boat, The Bill, Black Books, Breakwater Reef, Fist Of Fun, Kerching*. He has recently finished filming for *Casualty*. **Radio includes** *My Omellete* (BBC), one of five plays commissioned to mark the 60th anniversary of partition. **Film:** *Beginner's Luck* (Late Night Pictures), *Door to Door* (London Film School) and *The Ball* (Student Film). While training in Glasgow: *Time Lapse* (Arches Theatre), *'Tis Pity She's A Whore, The Pleasureman* (Citizens), *Orpheus* (Atharod Academie, Munich) and *Baal* (California Institute of the Arts, Los Angeles). Amarjit was in the workshop production of *Zameen* at Soho Theatre.

### Ravin J Ganatra LAL

Graduated from Manchester Polytechnic School of Theatre. **Theatre:** *Bombay Dreams* (RUG), *A Passage To India* (Riverside Studios/Shared Experience), *The Savage Sensuality* (Shakespeare's Globe), *The Journey To The West* trilogy, *The Bourgeois Gentleman* (Tara Arts), *The Mahabharata* (YOMT), *Natural World* (Kali), *Nagwanti* (Parampaka Productions), *Hamlet, The Winter's Tale, The Life of Galileo* (all Manchester Library Theatre), *Voices On the Wind, Aurangzebe* (RNT Studio), *The Wind In the Willows* (Solent People's Theatre), *Travesties* (CTC Productions), *The Ramayana* (International tours). **TV & Film:** *Coronation St, Prime Suspect, Deep Secrets, No Child of Mine, Circles of Deceit, No Worries* (ITV Network), *Waterloo Road, Torchwood, Eastenders, Doctors, Holby City, Dalziel and Pascoe, Casualty, Holding On, The Brittis Empire* (BBC), *Britz* (Mentorn/Ch4), *Entrapment* (Universal), *Tom and Thomas* (UK/Holland). **Radio:** Regular on *Silver Street* (BBC Asian Network), *The Eternal Bubble, Shakti, Voices On the Wind, The Red Oleander, Land, Skeleton, 2025, Samsara, The Hindu Tradition, The Angel of Nitshill Road, What Now, Now That We Are*

*Dead?* (BBC Radio 4/World Service).

Ravin recently launched his production company, www.gurujiproductions.com

### Goldy Notay CHANDNI

A graduate of the George Brown Drama School in Toronto, Canada. **Theatre:** Saheeda in Rani Moorthy's *Handful of Henna* (Sheffield Crucible Theatre 2006/2008), Mindy in *There's Something About Simmy* (Rifco Arts/Theatre Royal Stratford East), Chandni in *Zameen* (Kali at Soho Theatre Studio), Lata in *The Deranged Marriage* (Rifco Arts 2004/2005), Lady Capulet in *Romeo and Juliet* (Bermuda Arts Festival), The Moaner in *The vagina Monologues* (Bermuda Arts Festival), The Wife in *Blood Wedding* (Toronto Fringe), Asha in *East is not just East* (Leicester Haymarket), and Anna in *Lovin' It* (Yorkshire Women Theatre). **Film and TV:** Nina in *Holby City* (BBC), Priya in Mira Nair's *My Own Country* (US Feature Film), Mrs. Roper in *A Heartbeat* (Disney series regular), Diane in *Noddy* (BBC) and Yasmine in *Death Threat* (Toronto Film Festival Award Winner). Goldy recently appeared as a Bollywood Dancer in a Gordon Haskell Music Video and has presented on TV for ATN.

### Bhasker Patel BABA

**Theatre:** *Royal Hunt of the Sun, Playing with Fire, A Map of the World, Wicked Year, Tartuffe & The Magic Carpet, No Zealot Like a Convert, Hebron*, (National Theatre), *Timon of Athens* (Young Vic), *Blood, The Great Celestial Cow* (Royal Court/Joint Stock Theatre), *A Comedy Of Errors* (Bolton Octagon), *Hijra* (Plymouth Theatre Royal/The Bush), *A Passage To India* (Farnham Redgrave), *Macbeth* (Half Moon/ NY International Festival), *Little Clay Cart, Vigilantes* (Arts), *Whale* (Sheffield Crucible). **Film:** *Thunderbirds, "8" Person to Person, Kidulthood, Drachenfutter, Being Human, Goldeneye, My Son The Fanatic, Wild West, Brothers In Trouble, Arabian Nights, Immaculate Conception, A Business Affair, Transatlantis, Flight, Partition, Don't Stop Dreaming, Mad Dogs, Just Ines, What's Your Name 41?* **TV:** *Dr Who, Fairy Tales – Billy Goat, The Changeling, Dirty Filthy Love, Only Fools & Horses, Roger Roger, High Hopes, Funland, Dalziel & Pascoe, Holby Blue, The Last Detective, Murder in Mind, State of Mind, The Scarlet Pimpernel, Game On, Two Oranges & A Mango, Birds of a Feather, Jewel in the Crown, Crown Court, Keen Eddy, Civvies*. **Radio:** *No 1 Ladies Detective Agency*. **Award:** CIVIS Award (Germany) Best Actor for *Drachenfutter*.

### Gurpreet Singh DHANAI

Trained at LAMDA, National Youth Theatre and National Youth Music Theatre. **Theatre:** Ashish in *White Open Spaces* (Pentabus Theatre), Amiens/Hymen in *As You Like It*, Sebastian in *Twelfth Night* (RSC), *Orientalisms* (Border Crossings), Manir in *East Is East* (New Vic Theatre), Moritz Steifil in *Spring Awakening*, Cassio in *Othello* (Leicester Haymarket), Sprit in *The Ladies Paradise*, Maid in *The London Cuckolds*, Mysterious Man in *Into The Woods* (National Youth Music Theatre). **Musical:** *Bombay Dreams* (Victoria Palace Theatre), *Cabaret* (LAMDA), *Ladies Who Lunch* (Workshop Production for RSC). **Radio:** *On the Air* (Workshop for BBC Radio). **TV:** Dupinder/Badmarsh in *All About Me*, Ricky Patel in *Murder In Mind*, Rana in *Casualty* (BBC). **Film:** Shop Assistant in *Sari and Trainers* (Stretch Limo Productions). Gurpreet would like to dedicate his performance to Chanan Kaur & Kulwant Kaur.

### Mandeep Kaur Aujla DSM

A British Asian, Mandeep graduated from Central School of Speech and Drama, with a BA Hons in Theatre Practice and Stage Management. Prior studies include Theatre Studies, Drama and Fine Arts at Liverpool University and Surrey School of Performing and Dance, derived from an artistic and graphical background from the age of 13. **Recent credits:** *Tales From The Brothers Grimm, As A Mother Of A Brown Boy, Taikonaut!, The Deranged Marriage, The Libertines, Miscellaneous Festival, Stars in the Morning Sky*. Through her recent study of theatre practice, Mandeep embraces an immense interest and exploration in ethnic theatre and performances; targeting realistic yet challenging issues we face in life. She is currently pioneering a form of renewal and admission in this field of work and is promoting a greater existence through teaching and creating more fellowship and productions.

### Jenny Cane LIGHTING DESIGNER

Jenny was born in Sri Lanka and has designed lighting for productions throughout the world. Her lighting for music theatre productions, including Sondheim musicals in Leicester and London, has been seen around Britain. West End productions include several for Lloyd Webber and Cameron Mackintosh as well as spoken theatre. Her theatre productions range from Shakespeare to pantomime; from Sheridan to Alan Bennett in theatres from Edinburgh to Plymouth as well as abroad. Opera lighting includes work for Scottish Opera, the English National Opera and in Antwerp. Dance lighting includes productions for Adzido.

### Sayan Kent COMPOSER

**Composing includes** *Two* (Liverpool Royal Court), *Spangleguts* (London Bubble), *Paper Thin, Sock 'em with Honey, Calcutta Kosher* (Kali Theatre), *Chaos, Bells*, (Birmingham Rep), *Hound of the Baskervilles* (Paul Farrah Prods), *Phantom Sausage* (Ipswich Wolsey), *Turn of the Screw, Silas Marner, Limestone Cowboy, Cinderella, Mother Goose, Dick Whittington, Aladdin* (Coventry Belgrade), *Truckers* (Harrogate), *A Hard Rain* (Northampton), *The Good Companions, Country* (Stoke New Vic), *Dinosaur Dreams* (Unicorn), *Hot Doris The Musical* (Oval House), *Factory Follies* (Croydon Warehouse), *72 Days and Bloody Elektra* (Oval House /Albany) and four years as songwriter/performer with The Hot Doris Band. Sayan is also a writer, actor and director.

### Natalie Ibu ASSISTANT DIRECTOR

Graduated in 2004 with First Class Honours degree in Theatre from De Montfort University and completed a year's attachment as Trainee Director with New Perspectives Theatre Co. As **Assistant Director:** *Fugee* (Lyceum Youth Theatre), *Peter Pan, Desire Under the Elms* (Citizens), *The Shadow of a Pie* (Lung Ha's Theatre Co), *The Ghost Downstairs, The Butterfly Lion* (New Perspectives Theatre Co). As **Director:** *Say What...* (Arches Scratch), *I Know All The Secrets In My World...* (Contact); *Women's Voices* (NewWriting NewWorlds), *Hang Up, Lesson Learned* (Citizens' Young Co.), *Holly's Chariot* (Rehearsed reading for Nottingham Theatre Writing Partnerships), *Blooded* (Fresh Perspectives), *Road* (De Montfort University) and a devised piece of live art exploring identity, folklore and hair. Participated in master classes with Benji Reid, Max Stafford Clark, Ian Brown, Jonathan Lloyd, Karena Johnson and Felix Cross. Has also shadowed Jemima Levick (Stellar Quines) and Esther Richardson (Nottingham Playhouse).

### Janet Steel DIRECTOR

Since 2003 Janet has been Artistic Director of Kali. She began her career as an actress; **theatre work includes:** *Cinders, A Colder Climate* (Royal Court Theatre), *Blood Wedding* (Half Moon), *Romeo and Juliet* (Sherman Theatre & Albany Empire), *Oedipus Rex* (Tara Arts). **TV includes:** *An English Christmas, The Bride, Gems, The Refuge, Shalom Salaam*. Janet began directing in 1988 as assistant to Tessa Schneideman at Loose Change Theatre, producing UK premiers at BAC by Spanish authors, where she directed her first full-length piece, *White Biting Dog*. **Directing includes:** *Behzti* (The Birmingham Rep); *April in Paris, Breteviski Street, A Hard Rain, Top Girls* (Northampton Royal Theatre), *Exodus* (Millennium Mysteries at Coventry Belgrade), Brecht's *Antigone, The Mother, Orpheus Descending, An Ideal Husband, Romeo & Juliet, The Knockey, Serious Money* (Rose Bruford College). **For Kali:** *Sock 'em with Honey* by Bapsi Sidhwa, *Calcutta Kosher* by Shelley Silas, *Chaos and Paper Thin* by Azma Dar, *Deadeye* by Amber Lone and *A Thin Red Line* by Sonali Bhattacharyya.

### Emma Wee DESIGNER

Originally trained as a sculptor Emma works as a designer and director in theatre, opera and site specific collaborations. Past **design work includes:** *Die Lustige Witwe*, (Vlaamse Opera - Ghent), *Thérèse Raquin* (Opera-te, Linbury Theatre ROH, Covent Garden), *Swan Breaks* (Robert Hylton Urban Classicism), *Fresh* (RHUC/Channel 4), *How to Beat a Giant* (Unicorn Theatre) *Iron*, (Contact Theatre – Winner of 2005 MEN award for Best Studio Production), *In God We Trust:* (Peshkar Productions), *Something Dark* (Contact Theatre), *A Streetcar Named Desire* (National Theatre Studio), *Borderliners* (Albany Theatre), *Duet For Four* (Fin Walker Dance), *People Show 105, Damned & Divine* (English National Opera Studio). **Current productions include** *The Love For Three Oranges* (Scottish Opera) *How High Is Up* (Theatre Centre) and *6 Ways Out of the Desert* (Contact Theatre).

### Alex Weller

#### COMPANY STAGE MANAGER

Alex has worked as a Stage Manager on both a National and International level, including work in Dubai, Qatar and Thailand. **Productions include** *Peter Pan, Jungle Book, Beauty And The Beast, Ali Baba, Pinocchio, Treasure Island* (Universal Shows and Entertainment). Nationally Alex has toured *Hansel and Gretel* (Theatre Royal, Bury St Edmunds); *Love And Other Fairy Tales* (Scarlet); *Arabel's Raven, Anthem For Doomed Youth, It Was A Dark And Stormy Night, Shoah* (Southampton Nuffield Theatre), *Alice In Wonderland, Wind In The Willows, Emma, Ragged Trousered Philanthropists* (Chalkfoot Theatre Arts), *Shiver and Bliss* (Platform 4), *The Twits* (The Point YPT), *Donkey's Years* (Vienna's English Theatre) and *A Midsummer Night's Dream* (The Egg, Bath Theatre Royal). Site-specific work includes *Threepenny Opera* (Class and Corruption, Rye Fisheries), *Things That Go Bump* (Fireraisers, South Hill Park), *A Midsummer Night's Dream* (The Point YPT, Netley Abbey) and *The Comedy Of Errors* (Ludlow Castle, Ludlow Festival)

### Christopher Corner GENERAL MANAGER

A freelance Theatre Project Manager and Administrator, specialising in new writing, including work with Foco Novo, Joint Stock, Bristol Express, Paines Plough, Half Moon, Royal Court, Moving Theatre, The Wedding Collective, Andy Jordan Productions and The Wrestling School.